

TSEC/KL-7 Contact Panel (Voltage Readings)

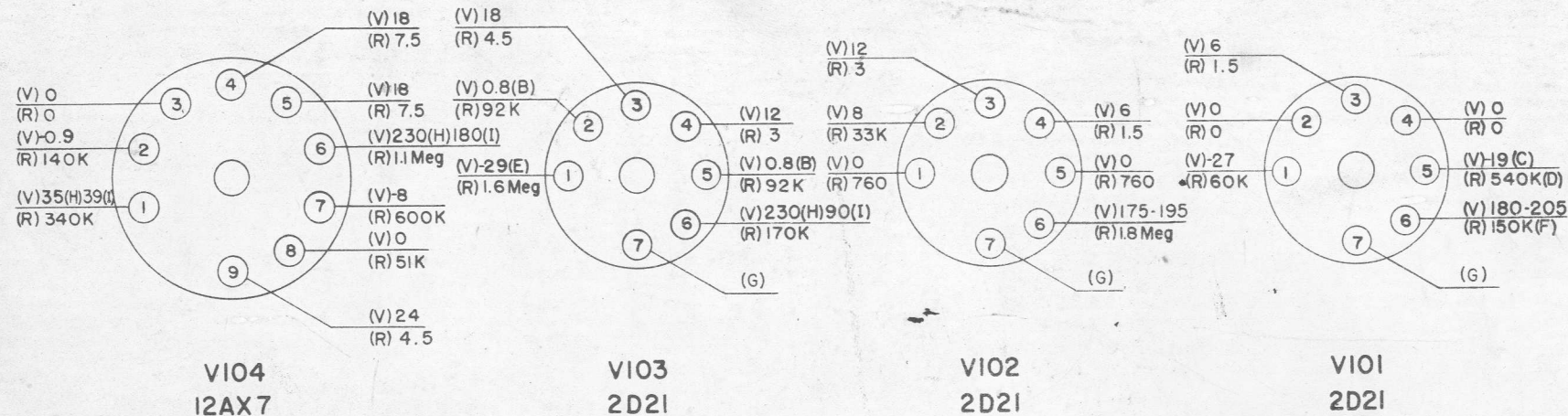
CE 26037

TYPICAL VOLTAGE READINGS

24v Input—20,000 Ohms/Voltmeter

The following voltage readings were all measured from terminal points which are pointed out on the schematic diagram in this publication. Use of these readings along with the schematic and the wiring diagrams provide a convenient means of trouble shooting TSEC/KL-7.

The readings given on the following chart are measured from the designated terminal point to terminal C9 on the common bus, unless otherwise specified.



BOTTOM VIEW OF TERMINALS SHOWN

NOTES:

- A. VOLTAGES MEASURED BETWEEN COMMON BUS AND EACH TUBE SOCKET TERMINAL WITH 20,000 OHMS/VOLT METER.
- B. INCREASES TO 125 VOLTS WHEN FIG KEY IS DEPRESSED.
- C. SHOULD RISE TO 0V WHEN RPT KEY IS DEPRESSED.
- D. DROPS TO 0 OHMS WHEN RPT KEY IS DEPRESSED.
- E. BECOMES 16 VOLTS POSITIVE WHEN FIG KEY IS DEPRESSED.
- F. SELECTOR HANDLE IN P-E'D POSITIONS. NC IN 0 POSITION.
- G. NO CONNECTION.
- H. LETTERS CONDITION
- I. FIGURES CONDITION

CAUTION:

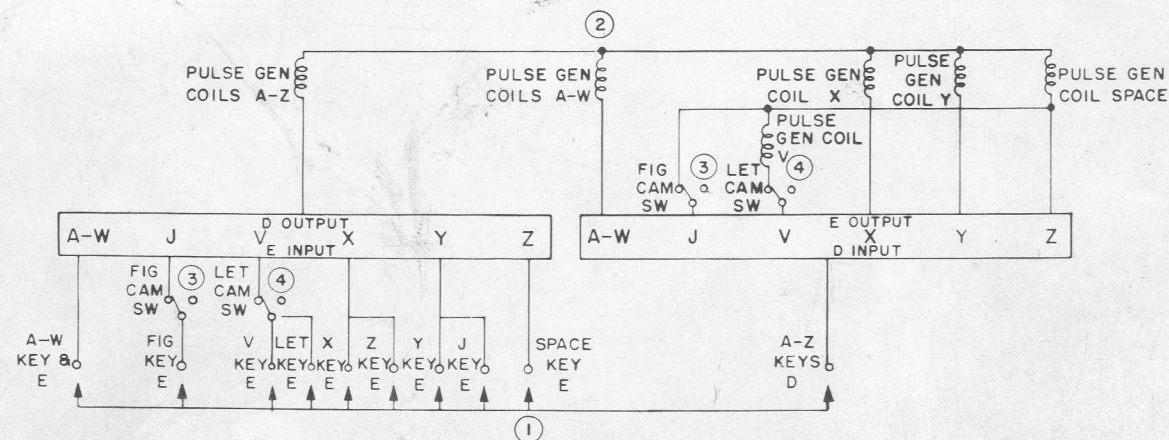
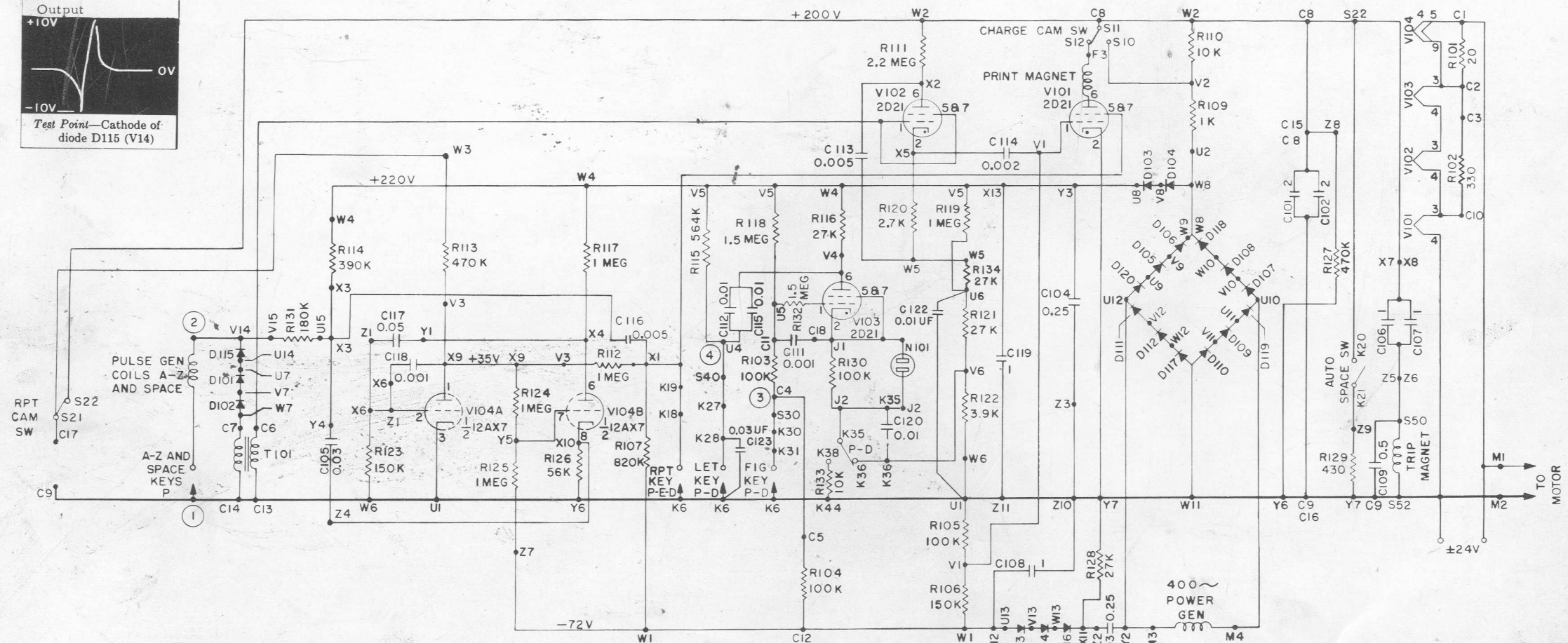
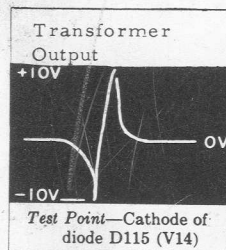
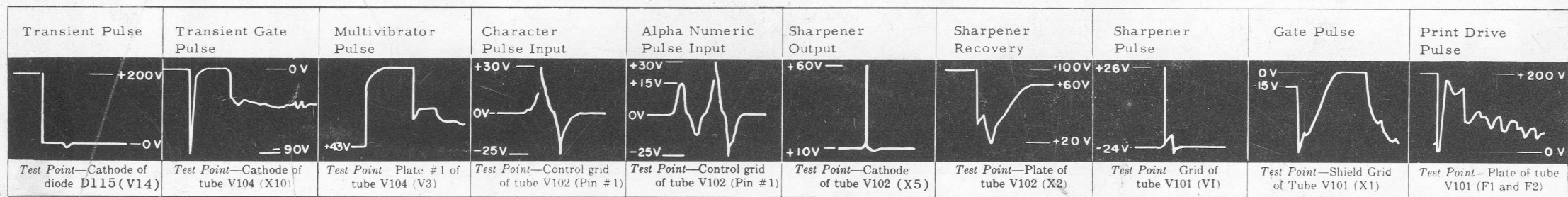
DISCONNECT POWER PRIOR TO READING RESISTANCE.

FROM	TERMINAL READING (1)	FROM	TERMINAL READING (1)
A1	0	V14	+200
A2	0	W1	-65 — -75
A3	+24 (4)	W2	+215
A4	+24 (5)	W2	+190 (2)
C1	+24	W3	+215
C2	+19	W7	0
C10	+6.5	W8	+220
C11	-30	X1	-19 (6)
U4	+240	X1	0 (7)
U4	+180 — +190 (2)	X3	+180(8) +220(9)
V1	-27	X4	+230(9) — +180(8)
V5	+240	X9	+40
V5	+205 (2)	Y5	-8.5
V6	+1	V101-1	-27
V6	+17 (3)	M3-M4	150-165(AC) (10)

Note: (1) All readings taken with machine in letters operation, unless otherwise specified.

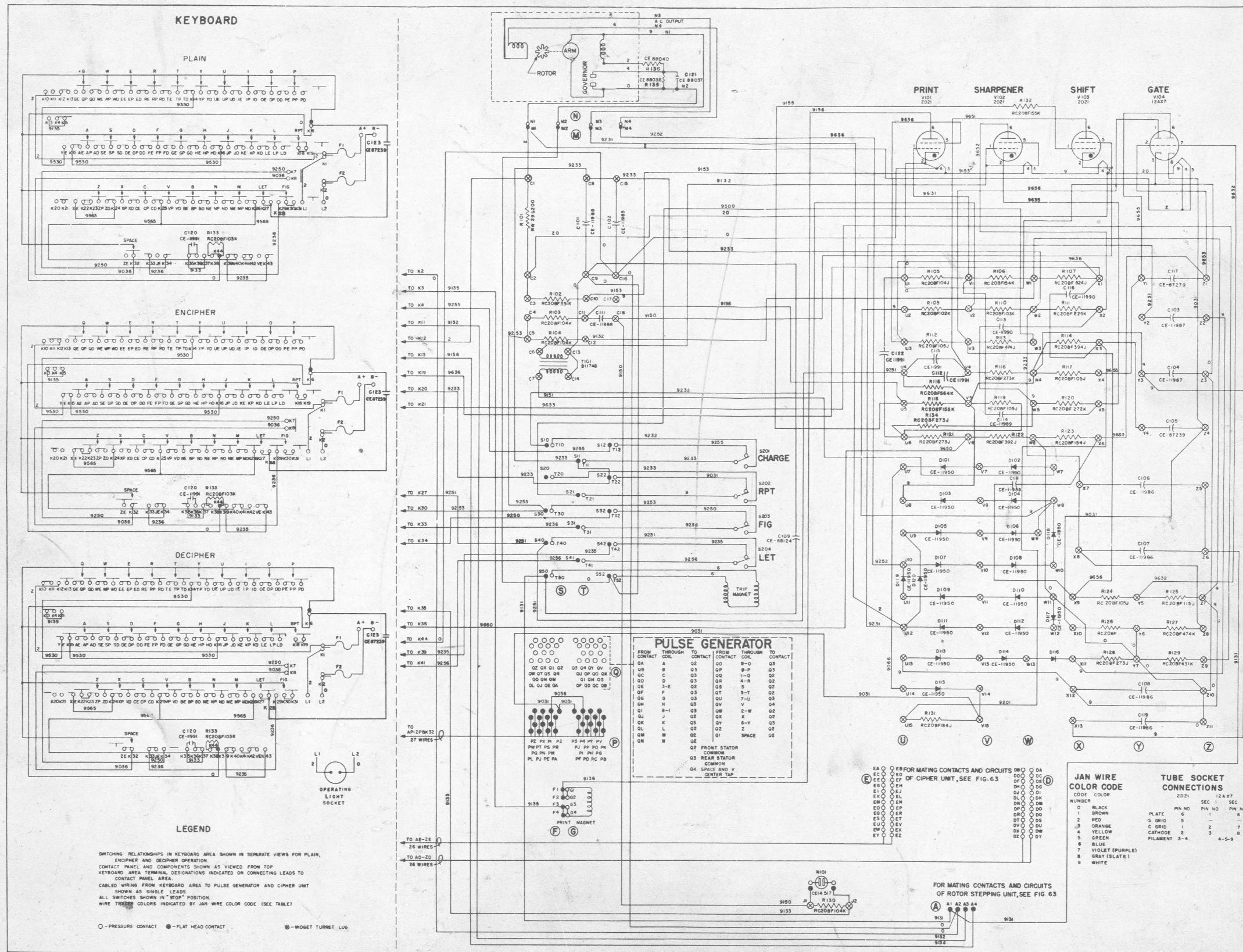
- (2) Figures operation.
- (3) Figures operation, plain or decipher operation.
- (4) Encipher or decipher operation.
- (5) Plain operation.
- (6) RPT key released.
- (7) RPT key depressed.
- (8) Figures condition.
- (9) Letters condition.
- (10) Measure between M3 and M4 using AC scale.

TSEC/KL-7 Tube Socket and Resistance Data

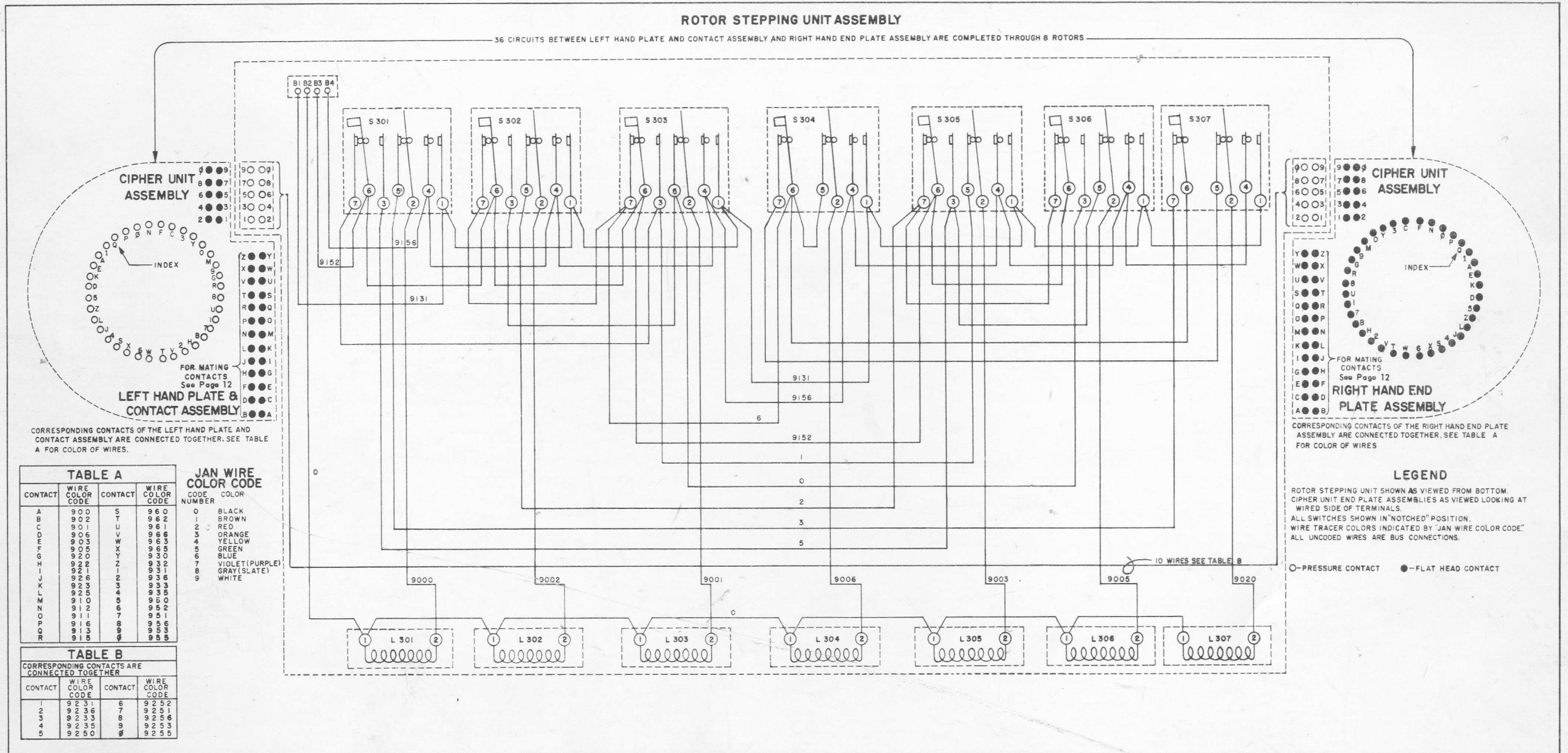


REFERENCE
CATH ← IN63 OR EQUIVALENT
V101 PRINT TUBE
V102 SHARPENER TUBE
V103 SHIFT TUBE
V104 GATE TUBE
ALL CAPACITOR VALUES ARE IN MICROFARADS
RESISTOR VALUES: K=KILOHMS
MEG=MEGOHMS

TSEC/KL-7 Schematic Diagram



TSEC/KL-7 Actual Wiring Diagram



KLK-7/TSEC and KLA-7/TSEC Actual Wiring Diagram